



# UK Scholarships

---

E-Book

# **Contents**

(Click to jump to the relevant page)

## **Scholarships and funding**

### **I. GREAT Scholarships**

### **II. GREAT Scholarships for justice and law**

### **III. Chevening Scholarships**

### **IV. Commonwealth Scholarships**

### **V. British Council scholarships for women in STEM**

### **VI. Scotland's Saltire Scholarships**

## **UK University Scholarships**

**Bishop Grosseteste University**

**De Montfort University**

**Edge Hill University**

**Falmouth University**

**University of Plymouth**

**University of South Wales**

**Swansea University**

**University of Warwick**



# Scholarships and funding

## An investment in your future

Have you ever wondered what a UK education can do for you? Alongside a world-class qualification, studying in the UK will give you the opportunity to experience a new culture, network with students and professionals from all over the world, and gain skills to help further your career development.

There are various financial support options available to help fund your studies in the UK. This includes scholarships, grants, bursaries, fellowships, financial awards and loans.

## Anything is possible

Receiving financial support could help you achieve your dreams – be it progressing your career, starting your own business or bringing change and opportunity to your community. Many scholarship recipients have talked about how the opportunity has transformed their lives. They have one piece of advice for students thinking of applying for a scholarship: ‘Just go for it!’

## Scholarships and financial support

The UK government offers hundreds of scholarships, bursaries and additional financial support to students from several countries. You can visit the **UKCISA (UK Council for International Student Affairs) website** to find out if you are eligible for a scholarship.

Many institutions also offer their own financial assistance, and you can check their websites for more information.

Lots of universities offer fully-funded postgraduate studentships. You can find out more from your chosen university or from specialist websites like **Postgraduate Studentships** and **Prospects**.

# I. GREAT Scholarships

If you're dreaming of a postgraduate degree in the UK but need help funding your studies, a GREAT scholarship could be for you.

GREAT Scholarships offers scholarships from UK universities, across a variety of subjects for students from 18 countries. Each scholarship is worth a minimum of £10,000 towards tuition fees for a one-year taught postgraduate course.

Each scholarship is jointly funded by the UK government's GREAT Britain Campaign and the British Council with participating UK higher education institutions.

As part of the programme, all GREAT scholars will be invited to a welcome event in the first semester and a networking event in the second semester.

## Who is it for?

GREAT scholars must:

- be a citizen of a GREAT-eligible country or territory
- have an undergraduate degree, be motivated, and have an interest in the proposed subject area
- meet the English language requirement of the UK HEI
- establish an engagement with the UK as a scholar, through personal and academic fulfilment
- be willing to attend a networking event of all UK based GREAT scholars, to discuss experiences and capture perceptions of studying in the UK
- be willing to maintain contact with the British Council and their HEI and act as an ambassador for the GREAT Scholarships
- as an alumnus of the GREAT Scholarships, be willing occasionally to speak to potential candidates about his or her own experience of studying in the UK.





## How to apply

1. Visit the university page above to find out more information and then follow the link through to the university's website.
2. Apply for individual scholarships following the instructions given on each universities' scholarship webpages.
3. The deadline to apply for a GREAT Scholarship varies according to each institution. For details on individual institutions' deadlines, please see the institution page.
4. Successful scholars will be informed by individual universities on the result of their applications.
5. Scholarship funding will be issued to successful scholars by individual universities after registration.

## Applications for the 2022-23 academic year are open.

Find out more here [study-uk.britishcouncil.org/scholarships/great-scholarships](https://study-uk.britishcouncil.org/scholarships/great-scholarships)

## Find your country

For the 2022-23 academic year there are a number of GREAT Scholarships available at the institutions listed in each countries below. Please visit the individual university page for more information and how to apply.

### Brunei

- [Oxford Brookes University](#)
- [University of Essex](#)
- [University of Glasgow](#)
- [University of Northampton](#)
- [University of Surrey](#)

Find out more here: [study-uk.britishcouncil.org/scholarships/great-scholarships/brunei](https://study-uk.britishcouncil.org/scholarships/great-scholarships/brunei)

### China

- [Anglia Ruskin University](#)
- [Cardiff University](#)
- [Cranfield University](#)
- [Falmouth University](#)
- [Sheffield Hallam University](#)
- [University of Edinburgh](#)

- [Trinity Laban Conservatoire of Music and Dance](#)
- [University College London](#)
- [University of Bath](#)
- [University of Cumbria](#)
- [University of Derby](#)
- [University of Essex](#)
- [University of Exeter](#)
- [University of Glasgow](#)
- [University of Hull](#)
- [University of Kent](#)  
(January 2022 and September 2022 intake)
- [University of Reading](#)
- [University of St Andrew's](#)
- [University of Surrey](#)
- [University of Sussex](#)

Find out more here: [study-uk.britishcouncil.org/scholarships/great-scholarships/china](https://study-uk.britishcouncil.org/scholarships/great-scholarships/china)

## Indonesia

- **Keele University**
- **Sheffield Hallam University**
- **Swansea University**
- **University of Bath**
- **University of Derby**
- **University of Dundee**
- **University of Nottingham**
- **University of Reading**
- **University of Stirling**
- **University of Wolverhampton**

Find out more here: [study-uk.  
britishcouncil.org/scholarships/  
great-scholarships/indonesia](https://study-uk.britishcouncil.org/scholarships/great-scholarships/indonesia)

## Malaysia

- **Bishop Grosseteste University**
- **Keele University**
- **Liverpool John Moores University**
- **Teesside University**
- **University of Derby**
- **University of Dundee**
- **University of Kent**
- **University of Sussex**

Find out more here: [study-uk.  
britishcouncil.org/scholarships/  
great-scholarships/malaysia](https://study-uk.britishcouncil.org/scholarships/great-scholarships/malaysia)

## Singapore

- **University College London**
- **University of Exeter**
- **University of Oxford**
- **University of Plymouth**
- **University of Reading**

Find out more here: [study-uk.  
britishcouncil.org/scholarships/  
great-scholarships/singapore](https://study-uk.britishcouncil.org/scholarships/great-scholarships/singapore)

## Thailand

- **Cardiff University**
- **Imperial College London**
- **Newcastle University**
- **Nottingham Trent University**
- **University of Cumbria**
- **University of Derby**
- **University of Hull**
- **University of Kent**

Find out more here: [study-uk.  
britishcouncil.org/scholarships/  
great-scholarships/thailand](https://study-uk.britishcouncil.org/scholarships/great-scholarships/thailand)

## Vietnam

- **University College London**  
(all subjects)
- **University of Hull**  
(all subjects)
- **University of Greenwich**  
(all subjects)
- **University of Westminster**  
(Humanities, Life Sciences, Social Sciences)

Find out more here: [study-uk.  
britishcouncil.org/scholarships/  
great-scholarships/vietnam](https://study-uk.britishcouncil.org/scholarships/great-scholarships/vietnam)



# II. GREAT Scholarships for justice and law

GREAT Scholarships for justice and law are for students who want to study at a UK university for a one-year postgraduate course. Students can apply for courses in a range of justice and law related subjects, including human rights, criminal justice and commercial law, at one of the 30 participating higher education institutions.

Each scholarship offers a minimum of £10,000 towards tuition fees.

The justice and law scholarships are in partnership with the Ministry for Justice and are jointly funded by the British Council, the GREAT Britain Campaign, and participating UK higher education institutions.

For the 2022-23 academic year postgraduate scholarships are available for students from the following East Asian countries.

China	Indonesia	Malaysia	Thailand
University of Birmingham	Nottingham Trent University	University of Cumbria	University of Dundee
University of Bradford	The University of Warwick	University of Glasgow	University of Kent
University of Bristol	University of Southampton	University of Hull	
University of Essex			
University of Strathclyde			

Find out more here:  
[study-uk.britishcouncil.org/scholarships/great-scholarships-for-justice-and-law](https://study-uk.britishcouncil.org/scholarships/great-scholarships-for-justice-and-law)

# III. Chevening Scholarships

Of all the UK scholarships on offer to international students, Chevening is one of the most prestigious and competitive.

Funded by the Foreign, Commonwealth & Development Office and partner organisations, Chevening Scholarships are awarded to individuals with demonstrable leadership potential and strong academic backgrounds.

The scholarship offers full financial support to study for any eligible master's degree at any UK university whilst also gaining access to a wide range of exclusive academic, professional, and cultural experiences.

All applicants undergo a rigorous selection process. The most suitable applicants are then personally selected by British embassies and high commissions around the world.

As well as offering fully-funded master's degrees, it is a unique opportunity for the next generation of leaders, influencers, and decision-makers to develop a relationship with the UK that will grow throughout their careers.

## Who is it for?

Chevening Scholars have ambition, leadership potential, a strong academic background, and an excellent record of rising to prominent positions in their countries across a range of fields.

Designed to support Britain's public diplomacy overseas, Chevening Scholarships provide the skills and experiences required to achieve at the highest levels, whilst supporting strong relationships with the UK in the future.

If you're an ambitious leader in the making and are looking for a postgraduate experience that will give you the very best preparation for success, then a Chevening Scholarship could be for you.







## How to apply

You can apply for a Chevening Scholarship by selecting your country from the dropdown list at [www.chevening.org/apply](https://www.chevening.org/apply). After submitting your application, it will be assessed against Chevening's **eligibility criteria**. Those applications that are deemed eligible will then be assessed by independent reading committees, who will create a longlist of applicants.

If you are longlisted, you will be invited to submit references and attend an interview with the British embassy or high commission in the country to which you applied. These face-to-face interviews are conducted in English by a panel, who will ask you questions about your personal and professional goals, and how a Chevening Scholarship would help you achieve them. Your choice of courses will also be taken into consideration. The panel will then score your interview against the global Chevening criteria.

For more information please visit [study-uk.britishcouncil.org/scholarships/chevening-scholarships](https://study-uk.britishcouncil.org/scholarships/chevening-scholarships) and [www.chevening.org](https://www.chevening.org)

# IV. Commonwealth Scholarships

The Commonwealth Scholarships scheme is aimed at students from across the Commonwealth who would not otherwise be able to afford to study in the UK. By funding postgraduate studies in a range of different study formats, the scheme helps to support future innovators and leaders.

This historic award is the UK's primary scholarship scheme focused on supporting British international development goals. It is designed to attract outstanding talent to UK universities whilst also supporting sustainable development overseas.

## Who is it for?

To apply for a Commonwealth Scholarship, you must be a citizen or permanent resident of a Commonwealth country. You will still be eligible if you are a refugee or British protected person.

You also need to have an undergraduate honours degree of at least upper second class (2:1). If you wish to study a PhD, you will need an appropriate master's degree too.

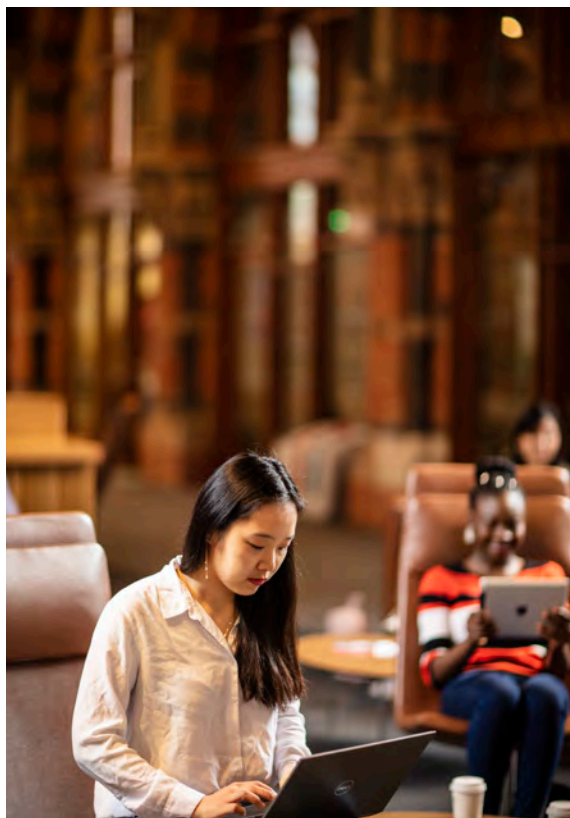
Finally, you must be unable to afford to study in the UK without the scholarship.

The eligibility criteria for each type of scholarship and fellowship vary. More information is available on the **CSC website**.

## How to apply

Depending on which scholarship you are applying for, you may need to apply through a **National Nominating Agency**, a **university**, or a **Non-Governmental Organisation**. To find out how to apply for each of the scholarships, please visit the **CSC apply page**.

For more information please visit [study-uk.britishcouncil.org/scholarships/commonwealth-scholarships](https://study-uk.britishcouncil.org/scholarships/commonwealth-scholarships) and [cscuk.dfid.gov.uk/apply](https://cscuk.dfid.gov.uk/apply)



# V. British Council scholarships for women in STEM

In 2020 the British Council launched a scholarship programme in partnership with 19 UK universities. Women from selected countries were able to apply for a Master's scholarship in a STEM subject at a UK university.

Applicants from the eligible countries (see below) will be able to apply for Master's scholarships. Additionally, a new set of funding opportunities will be opened up for women researchers in STEM to pursue Early Academic Fellowships. These will be for recent PhD graduates to undertake a research placement in the UK for up-to 12 months.

## Who is it for?

Applicants must:

- come from one of the following countries: Indonesia, Malaysia, Thailand, Vietnam (among other countries elsewhere)
- are able to take up a course of study in the UK for the academic year from Sept/Oct 2022 – 2023
- can demonstrate a need for financial support
- can attain the level of English required for postgraduate study/research at a UK university
- are active in the field with work experience or a proven interest in their subject area
- are passionate about their course of study and are willing to engage as committed British Council scholarship alumni.

For more information please visit

[www.britishcouncil.org/study-work-abroad/in-uk/scholarship-women-stem?\\_ga=2.61937704.567609336.1638716510-2036429355.1638529937](https://www.britishcouncil.org/study-work-abroad/in-uk/scholarship-women-stem?_ga=2.61937704.567609336.1638716510-2036429355.1638529937)

# VI. Scotland's Saltire Scholarships

Scotland's Saltire Scholarships is a programme of scholarships offered by the Scottish Government in collaboration with Scottish universities and colleges.

The scheme offers up to 50 awards, each worth £8000, towards tuition fees for any one year of full time study on a postgraduate Masters programme at any of Scotland's higher education institutions.

## Who is it for?

In order to be eligible for a Saltire Scholarship, candidates must:

- have a conditional or unconditional offer of a place at a Scottish university on an eligible course that will be delivered physically in Scotland or via distance online learning or via a combination of both
- be a citizen of Canada, India, Japan, USA, Pakistan or China (Hong Kong citizens are also eligible as it is a Special Administrative Region of China)
- be able to demonstrate that they can meet the costs of living in Scotland (where this is applicable) and the remaining tuition fees
- not have previously studied in Scotland
- not have previously received a Saltire Scholarship
- meet the language requirements of the course.

For more information please visit [www.scotland.org/study/saltire-scholarships](http://www.scotland.org/study/saltire-scholarships)





📍 Longdales Rd, Lincoln LN1 3DY

👤 **Wayne Dyble**  
International Manager

☎ +44 (0)15 2252 3806

✉ wayne.dyble@bishopg.ac.uk

🌐 [www.bishopg.ac.uk/apply-now/international/international-scholarships](http://www.bishopg.ac.uk/apply-now/international/international-scholarships)

BGU was founded in 1862 as a teacher training college. We provide first-class education, developing graduates of the highest calibre who go into the world and change lives for the better. We are experts in education and teacher training but now our teaching courses sit alongside an exciting range of other subjects. We currently educate over 2,000 students in subjects ranging from Drama to Business, at levels from Foundation Degree to PhD.

## Key facts:

- We have a rich heritage and tradition of training teachers.
- Our programmes provide the ideal balance between practical classroom experience and cutting-edge educational research.
- The 3rd highest employability rating of all UK universities in 2016.
- We were ranked the 2nd highest public university in England for student satisfaction in the 2016 UK National Student Survey.
- In the 2014 Research Excellence Framework we achieved the highest possible 4\* rating for our research in Education, which was judged to be of 'world-leading' quality.
- We have a global reputation, having recently worked across the ASEAN region.
- In 2016 we successfully delivered research consultancy to shape national initial teaching training reforms in Thailand.
- We offer high quality accredited training in English Language Teacher Training.

## Dean of Faculty Scholarship for Academic Achievement

- **Level of study:** UG & PG Taught
- **Subject areas:**  
All subject areas
- **Value (in GBP):**  
Up to a maximum of 50% Fee Waiver
- **Eligibility criteria:**  
Scholarships are available from the office of the Dean of Faculty to applicants who can demonstrate outstanding academic achievement in their prior studies. Scholarships are awarded in the form of a tuition fee waiver up to a maximum of 50% of the international tuition fee for the programme. Within their application applicants should identify why they feel their examination results make them suitable for an award.
- **Application deadline:**  
31 May 2022

## International Office Scholarships

- **Level of study:** UG & PG Taught
- **Subject areas:**  
All subject areas
- **Value (in GBP):**  
Up to a maximum of 50% Fee Waiver
- **Eligibility criteria:**  
Scholarships are available from the International Office for applicants who can demonstrate excellence and commitment to extra-curricular activities. Scholarships are awarded in the form of a tuition fee waiver up to a maximum of 50% of the international tuition fee for the programme.
- **Application deadline:**  
31 May 2022

Campus







# STUDY IN THE UK WITH **DE MONTFORT UNIVERSITY**

---

LEICESTER

De Montfort University (DMU) is a friendly and welcoming university offering over 300 courses at foundation, undergraduate and postgraduate levels across a range of disciplines including Business, Law, Architecture, Design, Engineering, Sciences, Nursing and Midwifery and more.

In 2021, DMU was named the best university for helping students build their careers at the NUE Awards. Through our award-winning life-long careers commitment, students are guaranteed work experience at companies such as Microsoft, IBM, Jaguar Rover, L'Oréal, Gymshark and more. DMU was also the winner of the 'Outstanding Support for Students' award at the Times Higher Education awards.

Based in the city of Leicester and just over an hour from London, DMU is a vibrant, multicultural community and one of the top 10 affordable UK student cities following the Student Living Index (compiled by NatWest).

**[www.dmu.ac.uk/international](http://www.dmu.ac.uk/international)**

📍 The Gateway Leicester  
LE1 9BH UNITED KINGDOM

👤 **Dan Winney**  
Regional Manager  
(North East Asia and South East  
Asia & Oceania)

☎ +44 (0)77 6016 8666

✉ daniel.winney@dmu.ac.uk

🌐 [www.dmu.ac.uk/international/en/fees-and-scholarships/international-scholarships.aspx](http://www.dmu.ac.uk/international/en/fees-and-scholarships/international-scholarships.aspx)

De Montfort University is founded in 1870 since then it has grown into a global institution with 26,000 students and 2,600 staff located in the heart of Leicester, where it has everything to offer to the students from learning to watching Premier League, one of the most passionate football league.

The university is recognised as a university ranked Gold in the Teaching Excellence Framework. Our passionate and enthusiastic lecturers have excelled in the National Teaching Fellowship awards and reflected on Best University Careers / Employability Service Awards of the year in 2021 by The National Undergraduate Employability Awards.

The university is partnered with some of the biggest and best local and national organisations in the UK such as Rolls-Royce, Siemens, Bosch, Jaguar Land Rover, 3T Logistics, McAfee and Leicester City Football Club, to create unique opportunities which will help develop your career and take you further.

Students will be able to learn from the finest academics with industry experience in various fields ranging from Business to Arts and Design and researchers who have made a real difference to people's lives, such as Dr Kandan, who repurposed plastic bottles to make prosthetic limb sockets.

## Sustainability Scholarship

- **Level of study:** PG
- **Subject areas:** All
- **Value (in GBP):** £4,000
- **Eligibility criteria:**
  - Hold an offer of admission from De Montfort University for a full time, postgraduate course.
  - Successfully complete any English Language requirements.
  - To be classified as an International Fee payer.
  - To have submitted the online application form.
- **Application deadline:** TBC

## High Achievers Scholarship

- **Level of study:** UG
- **Subject areas:** All
- **Value (in GBP):** £5,000 or a full fee waiver (for the first year of study)
- **Eligibility criteria:**
  - Hold an offer of admission from DMU for a full-time, undergraduate course.
  - To be assessed as an international fee payer.
  - To have achieved 75% or above in your high school or equivalent studies to be eligible for a £5,000 scholarship OR 80% or above in your high school or equivalent studies to be eligible for a full fee waiver.
  - To be considered your application form should cover the following areas:
    - Passion in advocating for education.
    - How you would make a positive contribution to DMU and the community in its efforts towards education.
    - How a DMU education would help you in the future.
- **Application deadline:** TBC





# Expand Your Opportunities

THE SUNDAY TIMES  
**GOOD  
UNIVERSITY  
GUIDE  
2022**  
**MODERN  
UNIVERSITY  
OF THE YEAR**

Edge Hill is an award-winning campus university in the North West of England, with over 13,500 students. With excellent transport links to Liverpool, Manchester and the Lake District, the University has been providing higher education since 1885, with a mission to create opportunity from knowledge. We teach across a range of subject areas, from Health and Social Care, to Business and Management, to Computing and Engineering. Whatever your current level of English, our Language Centre offers a variety of courses throughout the year, delivering the support and expert tuition you need.

- *The Times and Sunday Times Good University Guide* 'Modern University of the Year 2022', Edge Hill University has a wide range of scholarships available to our international students.
- The University of the Year (Educate North Awards 2020/21), we are in the top five in the UK for university facilities (Whatuni Student Choice Awards 2020).
- Edge Hill is a campus based university recognised as one of the UK's best green spaces (Green Flag Awards 2021), and the Safest University Town in the North West (*Complete University Guide* 2020). Award-winning campus accommodation is home to over 2,000 students.
- The University's support services have been voted top in the North West, and in the top 10 in the UK for student support (WhatUni Student Choice Awards 2020), while also being shortlisted for Outstanding Support for Students (Times Higher Education Awards 2021).
- We are ranked Top 10 in the UK for job prospects (Whatuni Student Choice Awards 2020), and top in the North West. We want to help you make the most of your career opportunities.

Discover more at  
**[edgehill.ac.uk/international](https://edgehill.ac.uk/international)**  
or contact us:  
**[international@edgehill.ac.uk](mailto:international@edgehill.ac.uk)**



📍 St. Helens Road, Ormskirk,  
Lancashire, England, L39 4QP

👤 **Liam Dootson**  
Senior International Recruitment  
and Marketing Manager

☎ +44 (0)16 9565 7122

✉ international@edgehill.ac.uk

🌐 [www.edgehill.ac.uk/international/  
fees-and-scholarships/?tab=  
scholarships](http://www.edgehill.ac.uk/international/fees-and-scholarships/?tab=scholarships)

**Edge Hill University (EHU)** has been renowned for its high teaching standards since it began as a teacher training college in 1885.

**EHU holds a Gold ranking in the national Teaching Excellence Framework (TEF, 2017),** and also received international recognition when The Times Higher Education World University Rankings 2022 ranked it as an **industry leader in both Education and Social Sciences.**

The university received further global recognition when it was included in the top 1000 universities in the world by the Times Higher Education World University Rankings 2022. EHU has also been crowned the **Modern University of the Year** in The Times and Sunday Times Good University Guide 2022 for the student experience, high quality of teaching and facilities and courses that are designed to meet employer needs.

The university was also named **University of the Year** in the Educate North awards 2020/21 for its commitment to delivering an exceptional student experience and placing students at the heart of everything it does.

## EHU Modern University of the Year 2022 Scholarships

In celebration of being named the 'Modern University of the Year', we are offering **19** scholarships at both undergraduate and postgraduate levels. The scholarships are worth **50% of the tuition fees in Year 1 only**.

Selected students will agree to

- become ambassadors for the university
- have a profile on the Edge Hill website including image
- provide weekly content for the International Office in the form of a vlog, blog, webinar, live chat and/or social media
- take part in promotional & marketing activities
- allow Edge Hill to pass on an active email address to prospective students for the duration of their studies and up to two years after graduation

Students applying for a scholarship must have already applied for a course of study at EHU. Once a student has an offer letter they can [apply for the scholarship online](#). The deadline is the **30th June 2022**, with the recipients notified within 2 weeks after this date. Full details of eligibility can be found on the [Fees and Scholarships](#) page.

## Postgraduate Excellence Scholarship

This scholarship is worth **£3,000** towards the tuition fees of a Postgraduate, MBA or MRes programme and will be awarded based on academic merit. Successful students will be notified on their offer letter, with the award being made at the discretion of the University. All full-time, overseas fee paying students will be automatically considered for the award of a scholarship when applying for a programme of studies.

Edge Hill University- Student Graduation 2021



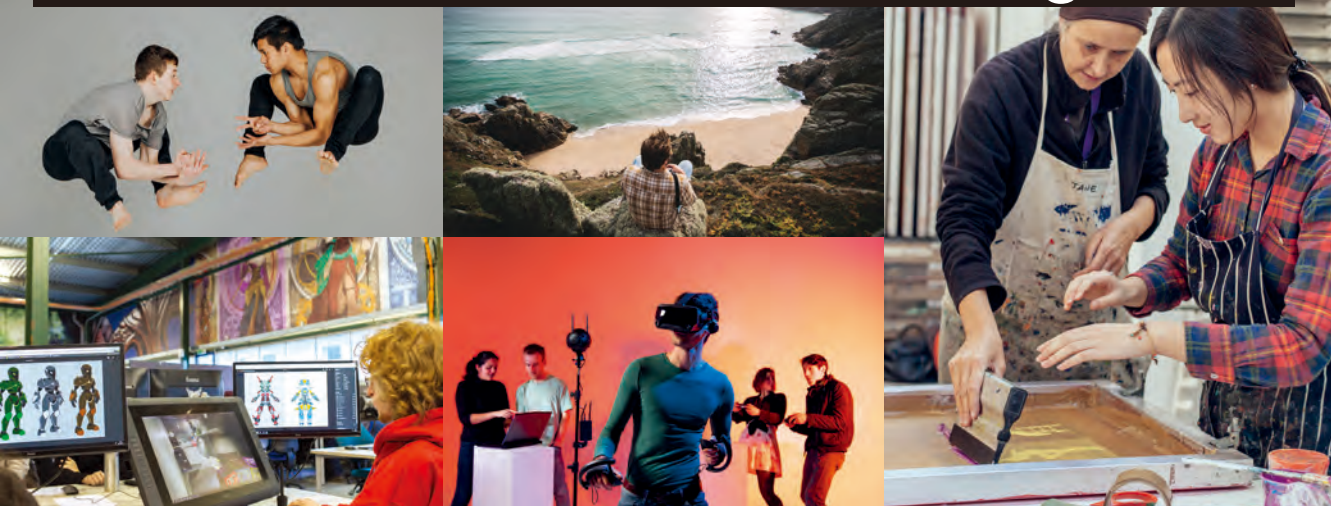
Modern University Of the Year 2022







## Creative. Connected. Courageous.



- History of over 120 years
- Top UK university for graduate entrepreneurs\*
- 97.6% of our postgraduate students are employed or in further study\*\*
- 2 beautiful campuses with world-class facilities
- Located near stunning beaches in the heart of Cornwall
- Broad range of student accommodation
- International Scholarships available

Programmes in:

- Animation, TV & Film
- Architecture, Product Design & Interiors
- Art & Illustration
- Business, Entrepreneurship & Events
- Computing, Games & Artificial Intelligence
- Design & Advertising
- Fashion & Textiles
- Music, Performance & Theatre
- Photography
- Writing & Journalism

Find out more at [falmouth.ac.uk/international](https://falmouth.ac.uk/international)  
Email: [international@falmouth.ac.uk](mailto:international@falmouth.ac.uk)  
WeChat: RSFALMOUTHU



@falmouthuni



@英国法尔茅斯大学



📍 Falmouth University, Woodlane,  
Falmouth, Cornwall TR11 4RH

👤 **Rachel Sené**  
East Asia Regional Manager

☎ +44 (0)74 3603 1999

✉ Rachel.sene@falmouth.ac.uk

💬 RSFALMOUTHU

🌐 [www.falmouth.ac.uk/study/student-funding/scholarships-for-international-students](http://www.falmouth.ac.uk/study/student-funding/scholarships-for-international-students)

Falmouth University is a leading creative institution located in the beautiful coastal region of Cornwall, England. With a rich history of over 120 years, today our future-focused courses and industry connections mean that we are at the forefront of the Creative Economy. Home to a vibrant community of more than 4500 students from all over the world, we offer a range of creative and business-related courses ranging from Fine Art and Architecture to Artificial Intelligence, Entrepreneurship and Creative Advertising.

Our students enjoy a lifestyle a little beyond the ordinary. Cornwall is regularly voted one of the best places to live in the UK due to its breath-taking scenery, stunning beaches and thriving cultural scene, and Falmouth is right at the heart of it. Our two campuses are set in beautiful gardens equipped with world-class facilities and offer great spaces for learning and socialising. Our Falmouth Campus is just a five-minute walk to the beach.

Our students are doing it for real from day one. Whether it's paid opportunities through our in-house agencies, our award-winning employability service or access to our multi-million-pound facilities, we empower our students to carve out successful, entrepreneurial careers by giving them a head start in industry.

Penryn Campus is a purpose-built contemporary creative hub



## International Talent Scholarship

- **Level of study:** UG & PG taught
- **Subject areas:** All on-campus taught courses
- **Value (in GBP):** £5000
- **To be eligible for the International Talent Awards you will:**
  - Qualify for the International fee rate (does not include EU students with settled status)
  - Be new to Falmouth University in 2022/23 (2021/2022 deferred students will also be considered for the scholarship)
  - Be entering directly into the first year of the course
  - Have applied for a Falmouth based course (not Falmouth Flexible or other partnership courses), starting in September 2022
- All offer holders who have received an offer by **23:59 BST on 1st June 2022** and fall within the eligibility criteria will be considered for the award. There is no form to be completed and this offer deadline forms the deadline of the award.

## GREAT China Scholarship

- **Level of study:** One-year postgraduate taught courses
- **Subject areas:** All
- **Value (in GBP):** £10,000
- **Eligible students must:**
  - Reside in China
  - Hold an offer for a one-year postgraduate taught programme at Falmouth
  - Have applied to study in 2022-23 academic year (with a September 2022 start)
  - If you are from China and have received an offer from us, to apply simply send a supporting statement (300 to 400 words) to [international@falmouth.ac.uk](mailto:international@falmouth.ac.uk). This statement will need to cover why you think you should be awarded a GREAT scholarship
- In order to be eligible, you must have received an offer from us and have sent us your supporting statement by **1 June 2022 at 23:59 BST**.

Falmouth is a vibrant coastal town known for its beautiful harbor and beaches



# BE PART OF SOMETHING BIGGER

STUDY IN BRITAIN'S  
OCEAN CITY



Scan for further  
information

- 📍 **Study** in a city campus by the sea
- 📍 **World's No.1 For Marine** In the Times Higher Education Impact Rankings 2021
- 📍 **World Top 25% for Research Citations** (World University Rankings 2021)
- 📍 **UK Top 25% For Teaching Quality** (The Times and the Sunday Times 2021)
- 📍 **A Global Family of 18,000 students** from **130 countries**
- 📍 **Top 50 UK University** (QS World University Rankings 2021)



📍 Drake Circus, Plymouth PL4 8AA, UK  
👤 **Daniel Rowe**  
Regional Manager, International Office  
☎ +44 (0)17 5258 8049  
✉ [international.office@plymouth.ac.uk](mailto:international.office@plymouth.ac.uk)  
🌐 [www.plymouth.ac.uk/study/fees/scholarships-bursaries-and-funding/international-students](http://www.plymouth.ac.uk/study/fees/scholarships-bursaries-and-funding/international-students)

The University of Plymouth is modern and dynamic, yet with an educational history dating from 1862. With approximately 20,000 students, the University of Plymouth is a large, prominent institution and is ranked as one of the UK's top 10 modern universities (Times Higher Education Young University Rankings 2019).

Plymouth, Britain's Ocean City, is located 3 hours by train from London, in the beautiful South West of England. The University is set in the heart of the city centre with shops, facilities and attractions all within short walking distance, making day-to-day life more convenient and keeping living costs lower.

The University has recently invested heavily in its facilities, including a renovated library (open 24/7), a Marine Building (on campus), a marine research station (oceanfront), and extra computing facilities and teaching spaces. Additionally, the campus has its own gym, sports halls, cinema, theatre, art gallery, and numerous cafés.

Additionally, an international college at the University of Plymouth offers on-campus foundation programmes and pre-master pathways to international students needing additional support or qualifications prior to their degree programme.

Scholarships are available for international students, for many of the undergraduate and postgraduate taught degree programmes available; eligibility is based on academic merit.

## Undergraduate international scholarships

- **Level of study:**  
Bachelor's degree, year 1 entry
- **Subject areas:**  
Business, Engineering, Sciences, Humanities, Psychology, selected healthcare
- **Value (in GBP):**  
From £2,000 up to 50% tuition fee (1st year), additional scholarships for subsequent years' study also available
- **Eligibility criteria:**  
Academic excellence; see website ([www.plymouth.ac.uk/study/fees/scholarships-bursaries-and-funding/undergraduate-international-scholarships](http://www.plymouth.ac.uk/study/fees/scholarships-bursaries-and-funding/undergraduate-international-scholarships)) for details.
- **Application deadline:**  
30 June 2022

## Postgraduate international scholarships

- **Level of study:**  
PG taught (Master) degree programmes
- **Subject areas:**  
Business, Engineering, Sciences, Humanities, Psychology, selected healthcare
- **Value (in GBP):**  
From £2,000 up to 50% tuition fee
- **Eligibility criteria:**  
Academic excellence; see website ([www.plymouth.ac.uk/study/fees/scholarships-bursaries-and-funding/international-students/postgraduate-scholarships-for-international-students](http://www.plymouth.ac.uk/study/fees/scholarships-bursaries-and-funding/international-students/postgraduate-scholarships-for-international-students)) for details.
- **Application deadline:**  
30 June 2022

University campus





# University of South Wales

University of South Wales

📍 University of South Wales,  
Llantwit Road, Treforest, Pontypridd,  
CF37 1DL. Wales, UK.

👤 **Thomas Hill**  
International Executive  
for South East Asia

☎ +44 (0)14 4348 3413

✉ Thomas.Hill@southwales.ac.uk

🌐 [www.southwales.ac.uk/international/fees-scholarships/international-scholarships/](http://www.southwales.ac.uk/international/fees-scholarships/international-scholarships/)

The University of South Wales is one of the largest universities in the UK, offering our students excellent opportunities and prospects.

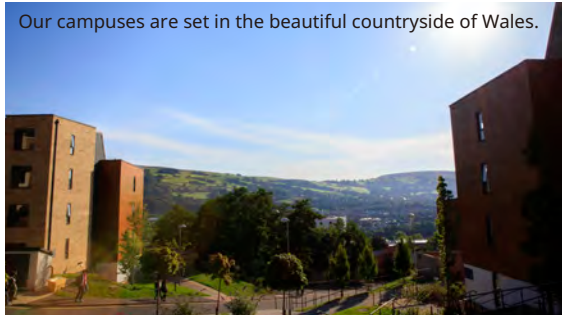
A course at USW is more than just a qualification. Inside and outside the classroom, we help you achieve your potential professionally and personally, and many of our courses include [work placements](#).

Here at the University of South Wales we always put our students first. We offer a friendly and academically challenging environment with an excellent reputation for teaching quality, state-of-the-art study facilities and supportive staff.

We have over 500 [courses](#) available, outstanding graduate employment rates and we've invested £160 million into our facilities.

Find out more about [studying with us](#) as well as [how to apply](#). If you have a friend who would like to apply [let us know](#).

Our campuses are set in the beautiful countryside of Wales.



The University of South Wales offers a range of generous scholarships for self-funding international students. You will be automatically considered for one of these awards when we receive your application. You do not need to make a separate application and confirmation of the scholarship will be included in your offer letter. All scholarships are applied for **every year** of study at the University. ([See Terms and Conditions](#))

## Chancellor's International Development Scholarship

Chancellor's International Development Scholarships of £2,500 are available for self-funded students from South East Asia.

- **Level of study:** UG & PG, full time taught
- **Subject areas:** All, excluding DBA and Pre-sessional English
- **Value (in GBP):** £2,500 for Nationals from S.E.Asia
- **Eligibility criteria:** Students must be self-funded.
- **Application deadline:** In-line with application deadline

## Early Payer Discount

If students chooses to pay in full at the time of enrolment, they may be eligible for an Early Payer Discount (EPD) of £300. ([See Terms and Conditions](#))

- **Level of study:** UG & PG, full time taught
- **Subject areas:** All, excluding DBA and Pre-sessional English
- **Value (in GBP):** £300
- **Eligibility criteria:** Payment of fees in full ahead of enrolment.
- **Application deadline:** Student's enrolment date

USW courses focus on employability and industry specific skills and knowledge.



Singleton Park, Swansea, SA2 8PP,  
Wales, UK

**Tess Saunders**  
Regional Manager for East &  
South East Asia

+44 (0)78 8544 6926

e.t.saunders@swansea.ac.uk

[www.swansea.ac.uk/international-students/my-finances/international-scholarships/](http://www.swansea.ac.uk/international-students/my-finances/international-scholarships/)

Swansea University is a UK Top 25 institution (The Guardian University Guide 2022) which offers students a breath-taking location to live and study. The dual campus university is 6th in the UK for Student satisfaction (NSS 2020), with Gold in the Teaching Excellence Framework, and UK top 15 for career prospects (Complete University Guide 2021).

Swansea University is home to 20,000 students from over 90 countries. We offer excellent student support including a dedicated International student support team and specialist advice on Student visas and the Graduate Route. Swansea University was voted as one of the best universities in the UK for international students at the Whatuni student choice awards in 2018 and 2019.

Swansea has been voted as one of the safest cities in the UK, as well as one of the most affordable UK University towns.

## International Excellence Scholarship

For September 2022 entry

- **Level of study:** UG & PG
- **Subject areas:** All
- **Value (in GBP):**
  - Up to GBP £4,000 for Postgraduate courses
  - Up to GBP £6,000 for Undergraduate courses
- **Full eligibility criteria and application deadline at:**  
[www.swansea.ac.uk/international-students/my-finances/international-scholarships/](http://www.swansea.ac.uk/international-students/my-finances/international-scholarships/)

## Thrive bursary

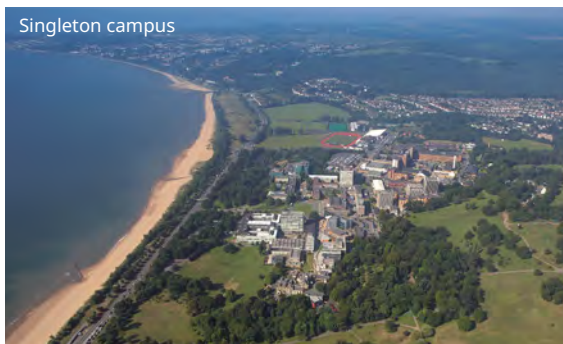
For September 2022 entry

- **Level of study:** UG & PG
- **Subject areas:** All
- **Value (in GBP):**  
£3,000 tuition fee reduction off first year of study
- **Eligibility criteria:**
  - Must be a permanent resident of Hong Kong or Malaysia
  - Self-funding students paying overseas fees
  - Applying directly to Swansea University on a full time taught course

Bay campus



Singleton campus



Celebrating graduation





# WHY WARWICK?



▶ **Warwick's campus is in the heart of England**, 5km from the centre of Coventry. Coventry is strategically located between the UK's two largest cities: London (1 hour by train) and Birmingham (20 minutes by train)



▶ **6th most targeted university** by the UK's Top 100 Graduate Employers (*The Graduate Market in 2021, High Fliers Research Ltd.*)



▶ **Top 10 for highest earnings** 5 years after graduating in over 11 subjects (UK government's 2018 *Longitudinal Education Outcomes* dataset)



▶ **Consistently ranked in the top 10** in the UK's university ranking tables, and in the top 100 globally (*Times Higher Education* and *QS World University Rankings*)



▶ **Various scholarship schemes** available for both undergraduate and postgraduate students

## HOW TO APPLY

### Warwick International Foundation Programme (IFP)

Applicants for the Warwick IFP should apply online at [warwick.ac.uk/study/ifp/apply](http://warwick.ac.uk/study/ifp/apply). You will need a recent school transcript and a personal statement.

### Undergraduate Courses

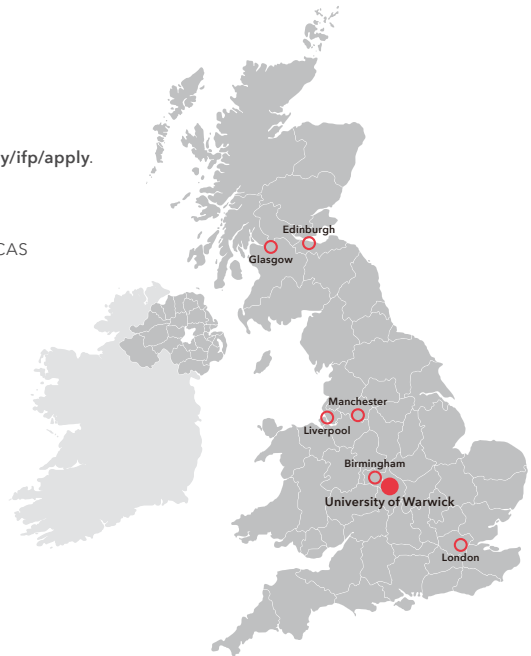
Applicants for undergraduate courses should apply online through the UCAS portal at [ucas.com](http://ucas.com)

### Postgraduate Courses

Applicants for postgraduate courses should apply online at [warwick.ac.uk/pgapply](http://warwick.ac.uk/pgapply). For postgraduate applicants, please prepare the following documents: degree certificate, transcript, two references, personal statement and English Language certificate.

### Scholarships

Warwick offers both undergraduate and postgraduate scholarships. For more information, please visit [warwick.ac.uk/io/admissions/finance/scholarships](http://warwick.ac.uk/io/admissions/finance/scholarships)



**"Warwick is a beacon among British universities for its dynamism, quality and entrepreneurial zeal, and that can be a huge factor in my success in society. Warwick is a close-knit community as well, a value that I cherish the most, given that no student is left behind and that collective effort trumps individual success, which has been a value and principle I have strived for."**

*Jing Xian Ong, Warwick Undergraduate Excellence Scholar*

### For more information, please contact:

University of Warwick (Southeast Asia)  
Tel: **+65 9383 7594** (Whatsapp available)  
[SEAsia@warwick.ac.uk](mailto:SEAsia@warwick.ac.uk)

[warwick.ac.uk/international](http://warwick.ac.uk/international)

**WARWICK**  
THE UNIVERSITY OF WARWICK

📍 Coventry CV4 7AL, United Kingdom

👤 **Imran Hashim**  
Warwick Liaison Manager

☎ +44 (0)24 7652 3523

✉ [seasia@warwick.ac.uk](mailto:seasia@warwick.ac.uk)

🌐 [www.warwick.ac.uk](http://www.warwick.ac.uk)

We're a world-leading university, with a reputation for both research excellence and a business sensibility that infuses our innovative teaching. We provide you with the opportunity to learn from experts and to become an expert in your own right.

On a safe, welcoming campus that has everything you need to study, live and enrich your experience, you'll become part of a supportive international community. You'll enjoy a location that gives you the perfect balance of city life and beautiful countryside.

Whatever you aim to achieve, be reassured that your study will put you in the best position to progress. That your experience at Warwick will set you apart. And that, by choosing us, you'll put yourself towards the front of the line when it comes to transformative learning, research and career opportunities.

Warwick is the 6th most targeted university by the UK's top 100 graduate employers (The Graduate Market in 2021, High Fliers Research)



Warwick Business School's MBA is ranked No. 1 in the UK for the sixth year in a row (The Economist, Which MBA?)

## Undergraduate Scholarships

Brilliant minds have always been welcome at Warwick. That's why we are committed to offering scholarships that make it easier for gifted, ambitious international learners to pursue their academic interests at one of the UK's most prestigious universities.

### a) Warwick Undergraduate Global Excellence Scholarship 2022

- **Level of study:** UG
- **Subject areas:** All
- **No. of Scholarships available:** 250
- **Value (in GBP):** Both full-fee and partial fee scholarships are available
- **Eligibility criteria:** Applicants should be self-funded and classed as an 'overseas' or 'international-fee paying' student for tuition fee purposes. [Please visit our website for the full list of eligibility criteria.](#)

### b) Albukhary Undergraduate Scholarships 2022

- **Level of study:** UG
- **Subject areas:** Business/ Economics/ Engineering
- **No. of Scholarships available:** Up to 10
- **Value (in GBP):** £20,000 across 3 years of study
- **Eligibility criteria:** Applicants should be self-funded and classed as an 'overseas' or 'international-fee paying' student for tuition fee purposes. [Please visit our website for the full list of eligibility criteria.](#)

## Postgraduate Scholarships

We offer a wide variety of postgraduate funding options for study at the University of Warwick, from postgraduate loans, university scholarships, fee awards, to academic department bursaries.

Taught Masters scholarships available include both full-fee and partial fee scholarships, while some PhD scholarships offer full payment of academic fees and a UKRI level stipend for 3.5 or 4 years (dependant on the particular CDT).

To help you navigate the many scholarship options available, we have developed a [scholarship search tool](#) [here](#).



## Disclaimer:

While every effort has been made to ensure that the information here is correct and up to date, the British Council accepts no legal liability for its accuracy, currency or completeness.